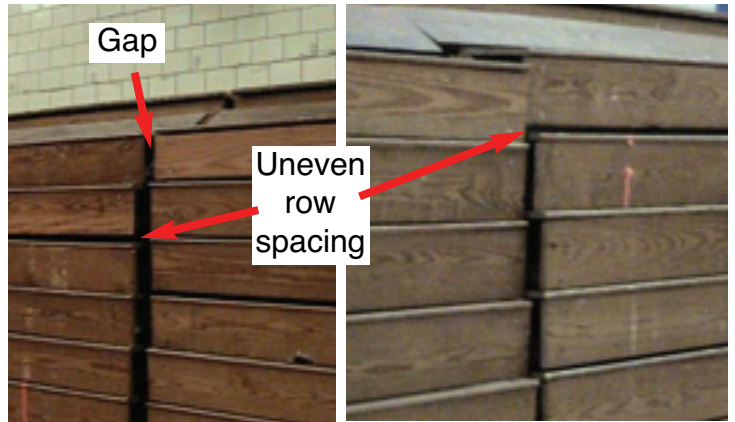


Case History: Old bleachers become new again

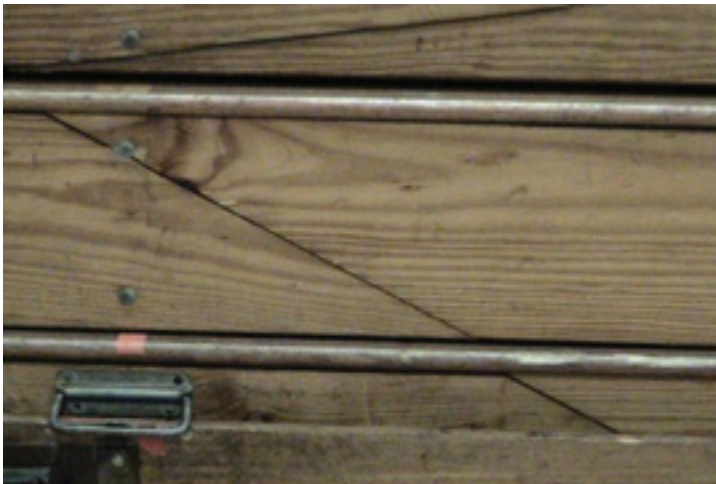
Situation: Chatham High School in Chatham, NJ had Hussey Bleachers. The wood seatboards, risers and other lumber showed the wear-and-tear of 25+ years of service -- they were discolored, dingy, and overall not attractive. Understructure was sagging and also required repair and service. Even though their appearance was delapidated, and safety updates were required, the basics were sound and could be brought to a "like new" condition at a substantial savings, compared to installing new bleachers. Installing a Century Design® "no-sag" system means these bleachers will continue to operate properly, without the problems associated with sagging.



Original bleachers in closed position – No end safety rails, no aisles or ADA wheelchair spaces.



Manually-operated bleachers have gaps between sections, presenting a safety hazard. Also note uneven spacing between rows, a sign that these bleachers are sagging, thus hard to operate.



Broken boards have been crudely spliced together, but are not structurally as strong as a whole board,



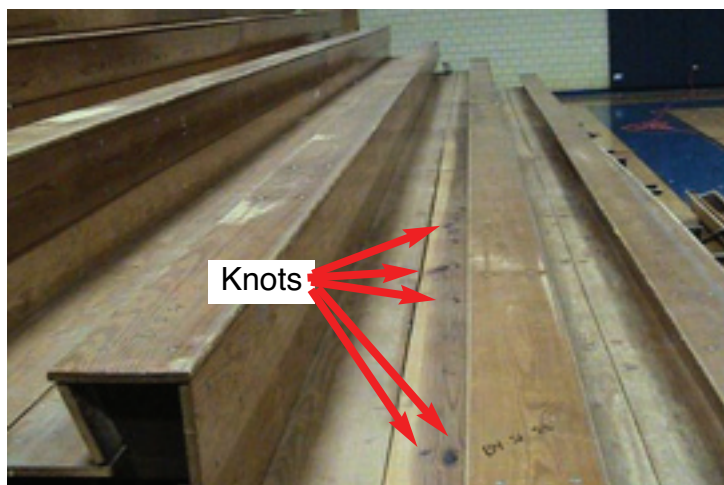
Here's another attempted repair, where a chunk of wood was bolted in, to replace a broken piece.



An original Southern Yellow Pine board was replaced with a locally-sourced Pine board with lots of knots. It has broken at the bottom and should be replaced.



Another broken board. It will be replaced by a new board from the Bleacherman's inventory of wood, using the same species (Southern Yellow Pine) and stained to match. Our wood shop can manufacture any type or size of board needed for your bleachers: Pine, Fir, Mahogany, solid, finger-jointed, or laminated. [Click here for more info.](#)



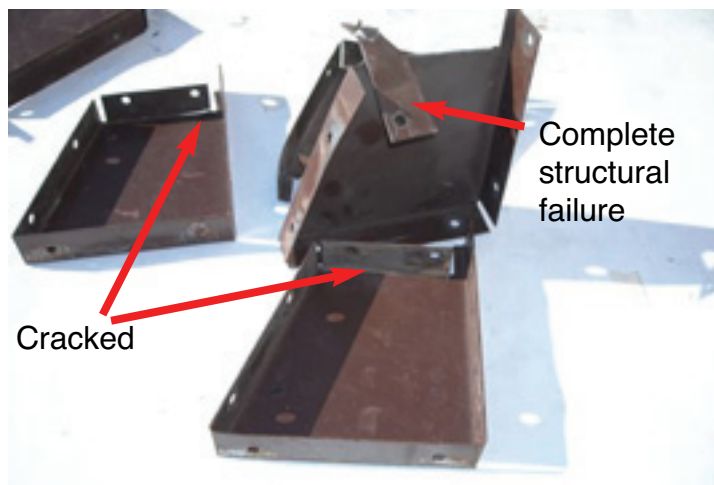
One of the footboards has been replaced with a locally-sourced Pine board. Note all the knots in the board. A knot is a “break” in the board, a weak spot where it is likely to break. All non-compliant boards were removed and replaced before deck was refinished.



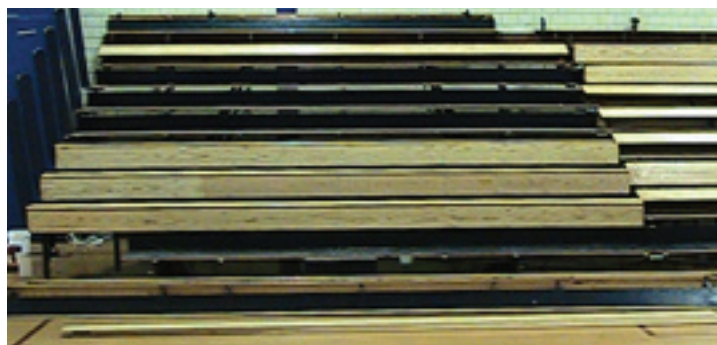
Seats, risers and toeboards were removed as one unit and sent to our shop for refinishing. Decks were cleaned and sanded. Here they are being painted with the first of two coats of approved floor and deck enamel. Owner chose the school colors for the contrasting deck color



Bleacherman employee is re-installing refinished seat/riser/toeboard units. Each one is re-assembled with all-new hardware for an “as-new” look.



“Seat cans” shown here hold the seat, riser and toeboard together and attach to a footboard support bracket on the understructure. These ones show metal fatigue, cracking and structural failure. Fortunately, Hussey Bleachers are one of the easiest brands of bleachers to convert to Evergreen Bleachers™. We work on and manufacture parts and motor systems for all brands of bleachers – even those manufacturers no longer in business.



The understructure was repaired, motors and safety rails were installed, before the refinished wood was put back into place. Thirty-one of the “seat cans” (shown in the top photo) were replaced, prior to the re-installation.



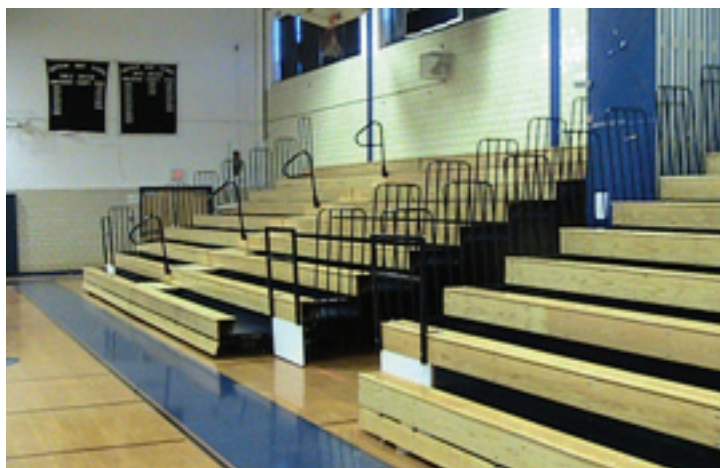
P-rails and seat level aisles with non-skid tape were installed. Note: bleachers were unanchored, realigned (to eliminate gaps) and motor drives added. Compare this to the gaps between sections shown on page 1.



This photo shows the difference between the original condition of the wood -- and what they look like after being planed (removing only 1/16" of wood), edged, sanded and refinished with three coats of approved sealer. It's the same wood! This project was done during the school year, with one half of the gym being refurbished at a time. Classes continued in the other half of the gym, while the Bleacherman rebuilt the bleachers in the closed-off half. We work around your school's schedule. Before beginning work, the school's athletic director and principal provide a list of dates and events when bleachers must be completed by -- and we meet those dates.



These bleachers look new and work like new. The 20-year Bleacherman warranty promises that they will continue to operate properly for many, many years to come.



Best of all, start-to-finish costs for refurbishing these bleachers was a fraction of the cost of discarding the old bleachers and completely replacing them with new bleachers.



Long view shows the closed bleachers with new safety equipment (in school colors) in place, and refinished "like-new" wood. Not visible: new motor drives and Century Design® "no-sag" system.



Motorized drives now will open the refurbished bleachers to the full open position at the push of a button. What a difference, compared to the previous, manually-operated bleachers.