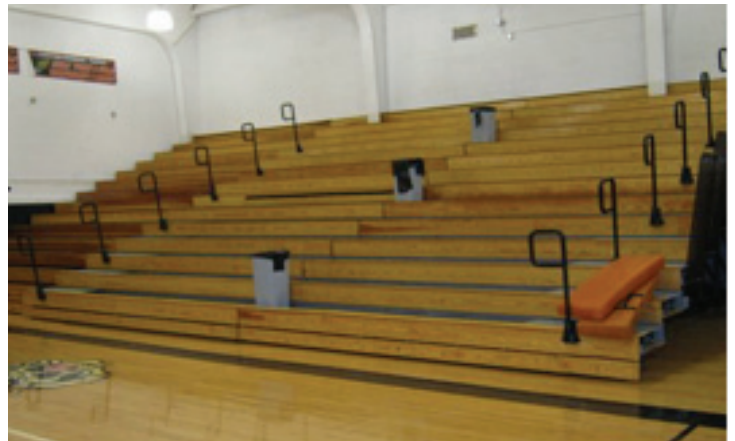


## Case History: Bleacherman fixes others mistakes

**Situation:** Croton-Harmon High School in Croton, NY had 25-year-old Hussey Bleachers that showed signs of wear and tear. The school district contracted with a local company for bleacher refurbishment. Unfortunately, this refurbishment ended up costing a lot more than the owner had anticipated. The job was not completed to the owner's satisfaction and was not accepted upon completion. (This required additional expense for legal fees.) Ultimately, the Bleacherman was called in, to finish the job correctly.



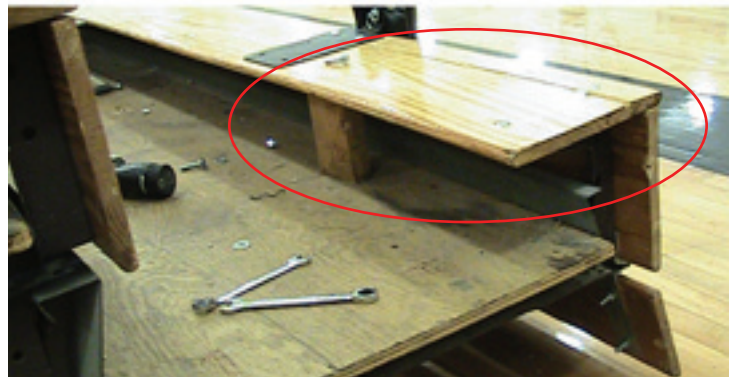
Croton-Harmon High School's bleachers were refinished and refurbished by another company (not the Bleacherman). Owner had concerns that the quality of workmanship and functioning of the bleachers was not right.



This photo shows the bleachers before the Bleacherman went to work. Note the aisles (with P-rails) are in the wrong location, and broken/damaged boards can be seen.



All the aisles with P-rails were incorrectly installed. P-rail should not be mounted in the first row -- in this position, it protrudes into the gym floor, presenting a safety hazard.



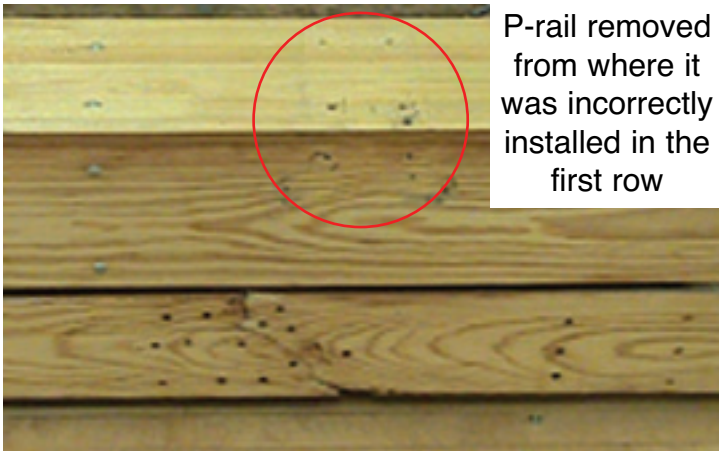
After removing aisle board, the unsafe workmanship that was previously hidden from view, was now evident and confirmed the owner's concerns for safety. Note broken seat-board at the aisle! (See pictures below).



Top view of seatboard seen in photo above. See split running through where bolt is, with 5 additional screws trying to hold it together. This board is unsafe and must be replaced. It should never have been installed, much less at an aisle.



A chunk of wood was used to prop up the broken seatboard. There is no reinforcement for the P-rail attachment to the seat and riser. Potential safety hazards such as this (the first of many), point out the risk of using unqualified contractors to work on your bleachers.



P-rail removed from where it was incorrectly installed in the first row

Completely broken swing riser. Multiple holes on each side of crack show where a repair was attempted. This board is unsafe and must be replaced.



The Bleacherman moved all of the four ft aisles to the correct locations in the middle of the bank of bleachers. Note that the P-rail is now correctly mounted on the second row.

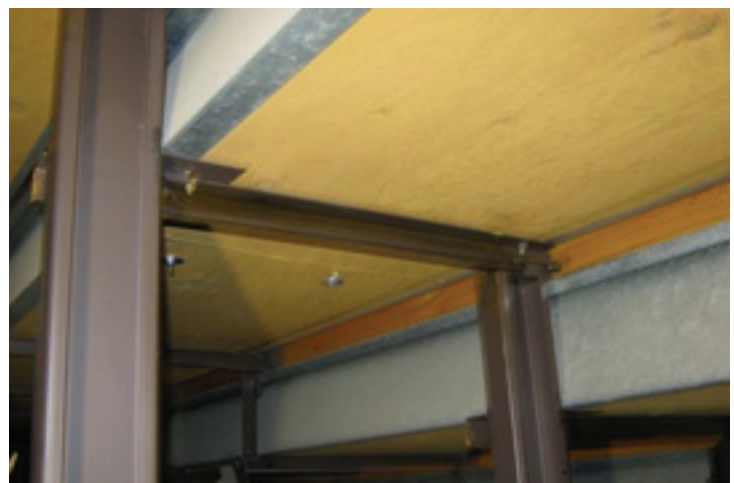


The contractor who originally worked on the bleacher refurbishment had refinished and reinstalled cracked and broken boards -- which should have been replaced.

These boards should have been reinstalled evenly. As seen above presents a trip hazard.



Circle shows where the row lock for this vertical support column used to be. It appears the contractor removed all of the row locks from the bleachers. This device actually locks the row in place in the open position, for added stability. These are a necessary and required part of the bleacher understructure. The Bleacherman replaced all the missing row locks from our extensive parts inventory.



In addition, after repair and service of the the understructure, it was thoroughly cleaned by the Bleacherman. No dust bunnies or debris on the floor here! We clean everything.



New motor drives were installed by the previous contractor. Even though these are brand-new, the motor drives were not working properly. Note white concrete weight mounted on the back of motor drive.



Motor drive seen from front, has no counter weight to offset the 90-lb weight on the back.



During operation to full open position, the first row would tilt up -- the front wheels of the motor drive and the bleachers would lift up, damaging the first row.



The Bleacherman installed a front counter weight so the motor drives would operate correctly, with no lifting. This engineering feat is called "common sense."



Seen here, the second, third and fourth rows are in the partial open position. The Century Design ® no-sag system provides continuous support in any configuration.



End view of third and fourth row in partial open position, showing the Century Design ® no-sag system. Note wheel on seat level "runner" supporting the live load on the row above.



Plywood deck system was unsightly and needed to be finished for an as-new look. Photo above shows the footboards prepared for painting -- workers have started edging the heelboards prior to painting the deck.



Here the worker is applying the first of two coats of approved deck sealer. The contrasting color is required by ADA, for those who are color blind or have depth perception issues.



Completed bleachers now have the required ADA wheelchair spaces. Bleacherman also offers safety pads for ADA rails that can be customized with the school's colors and mascot.



Now the bleachers have the aisles and P-rails in the correct position, second row end safety rails added, wheelchair cut-outs added. Bleachers were adjusted to provide an additional 18 inches of space from the "out-of-bounds" line to the leading edge of the first row. This space was 30 inches, now it is 48 inches.



Bleacher section in closed position. Note even row spacing, now that the Century Design® no-sag system has been installed.



The bleachers were virtually re-manufactured in place, and transformed into Evergreen Bleachers™. As a finishing touch, we applied our label to show that these bleachers are made to last and last.