

# Case History: Hamilton High School West, Hamilton Township, NJ New Interkal® Bleachers (less than three years old) -- and they're sagging

**Problem:** *Almost-new, three-year-old telescopic bleachers are hard to open, very difficult to close. Why? Because that's what was specified, when the "minimum" specifications for these bleachers was OK'd. The design criteria met all the legal requirements -- the absolute minimum required by law -- but it didn't meet what the bleacher owner REALLY needed, which was bleachers that would not sag, no matter what.*



Owner decided to replace the old bleachers with new telescopic bleachers. Old bleachers were discarded and new vinyl on steel telescopic bleachers were installed.



A section of the new bleachers is seen here. It is 24 ft in length, with vinyl on steel seating and all required safety equipment (aisles with P-rails, end safety rails).

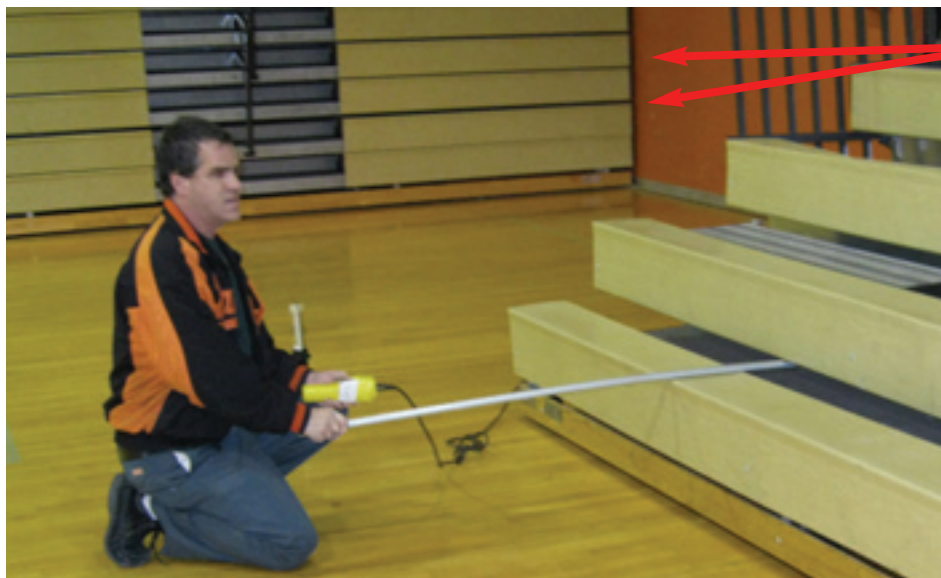


Sagging problems with new bleachers occurred almost immediately. In the photo above, Row 2 is bent down and forward. Row 1 is supported by wheels that roll on the floor.

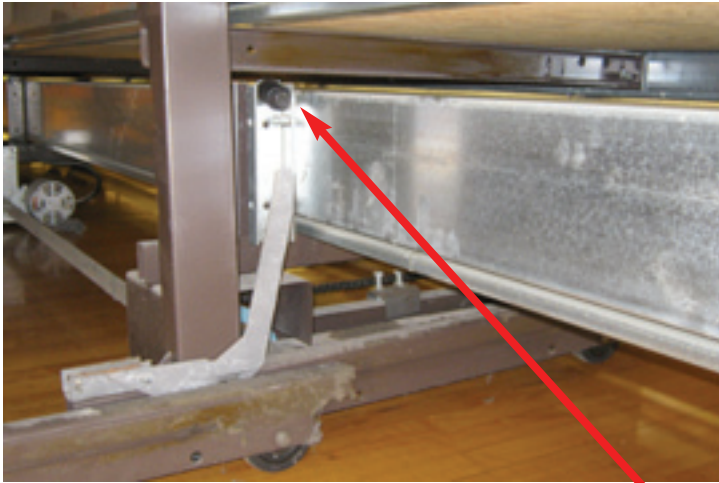


Row 1 should be able to slide underneath Row 2 without contacting it. However, Row 2 has sagged so much that the bleachers cannot be closed.

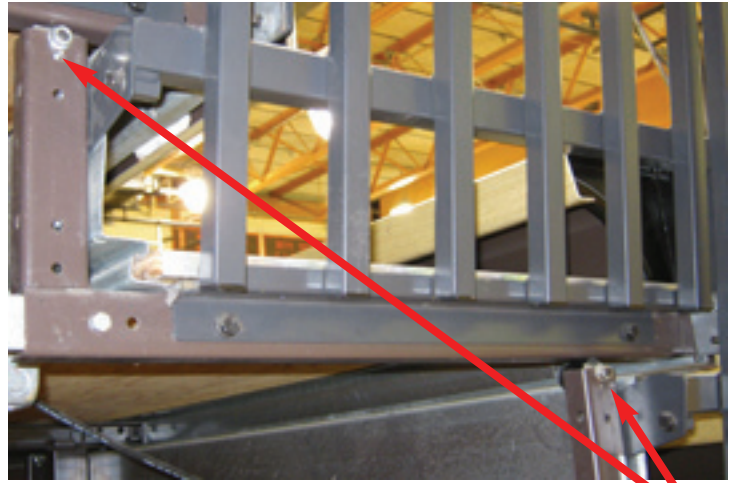
Bleacher operator seen here has pendant controls in one hand, a steel pipe in the other in order to lift the second row enough for the bleachers to close.



Note that bleachers in other sections have uneven row spacing because of sagging, and are also difficult to close. Motor systems are not powerful enough to move sagging bleachers because of the extreme friction of the rows rubbing on one another.



The footboard support bracket shown here rides on roller, which has been bent downward, because bleachers are sagging.



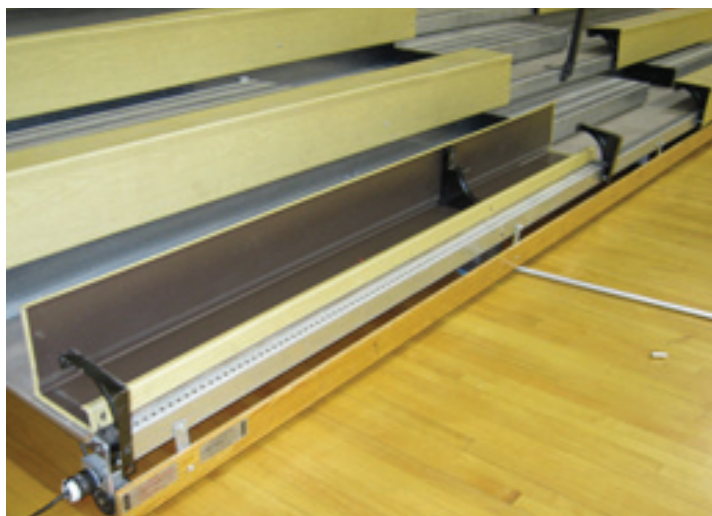
Another view of rollers attached to heelboard. These help to support and lift the rows when the bleachers are opened. The Bleacherman adds wheels to the front for continuous footboard support, which prevents sagging.



Carpenter's level shows that the footboard is sagging (even in the partial open position) approximately 1 inch toward the front of the bleachers. In the closed position, this row sagged approximately 3 inches.



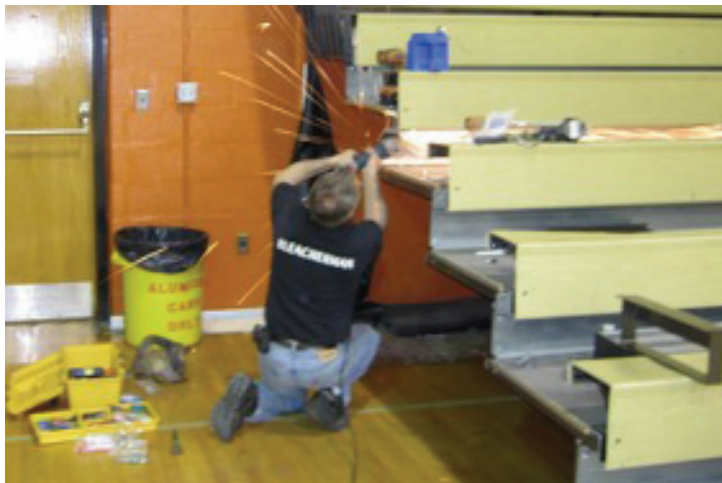
The first step is to straighten the understructure. Here a large floor jack is used to lift the bent arm to the correct position.



After understructure is repaired to OEM condition, other repairs are made. A first row seat bracket was broken as a result of trying to force the bleachers to close.



The bolt that held the seat bracket to the nosebeam was sheared off by the sagging row above. Here, the broken bolt is being removed (with an Easy-Out) for replacement.



Bleacherman technician is preparing the bleachers for installation of the Century Design® “runners” at the ends of the bleachers.



Century Design® no-sag system uses a seat level runner, plus the vinyl on steel seat, to provide continuous support in any position, open or closed.



A close-up of the Century Design® wheel on the runner in the full open position.



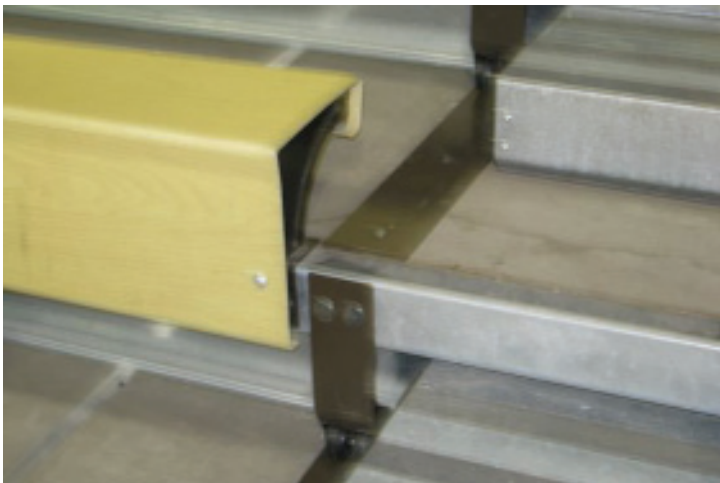
An end view of the Century Design® system in the partially open position, with end safety rail re-installed.



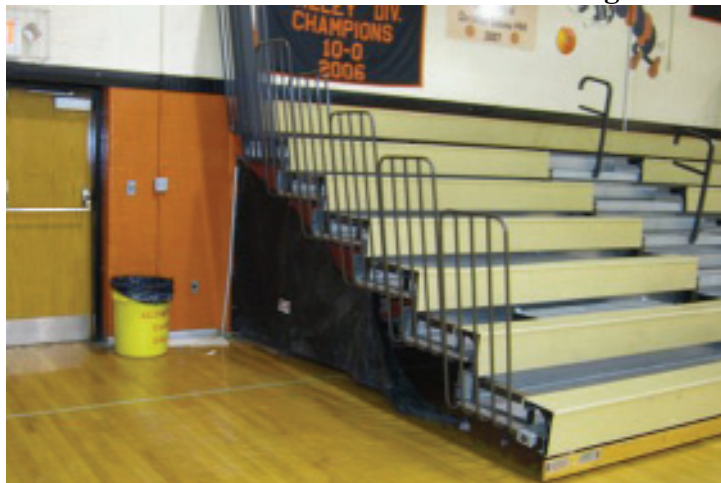
The Century Design® system that provides support at the aisles is a foot-level configuration -- the wheel rides on a runner installed on the footboard.



This photo shows the foot level Century Design® at the aisles in the closed position. (Note the even row spacing, now that the bleachers have been repaired to as-new condition.) Even if climbing does occur in the closed position, Century Design® guarantees that the rows cannot sag.



Aisle in open position shows the Century Design® wheels on the runner.



End view showing both seat level (at the end) and foot level (at the aisle) Century Design® installation.



Century Design® at the opposite end guarantees continuous support for the entire bleacher section. Crowbars or pipes are no longer needed to open or close the bleachers.



Refurbished/remanufactured bleachers in the closed position. Our “next-day” service can install the Century Design® on any new bleachers to prevent sagging and related damage, saving the owner a lot of money. (“Next day” means the day after the new bleachers have been installed.)

**Any new bleacher** sold today can be upgraded with a Century Design® system to prevent sagging and the damage to understructure and motor systems. Installing Century Design® as soon as the new bleachers are in place, eliminates the expense of repairing the understructure in the future.

**Any existing bleacher**, no matter how old can be upgraded with a Century Design® system. Old bleachers can be remanufactured in place, to as-new condition for even greater savings. Often, owners don’t realize the value of their existing bleachers. They assume that new bleachers will eliminate the problems and need for on-going, redundant repairs -- when the REAL problem is because of sagging.

Only Century Design® solves the problems associated with sagging, for good. Only the Bleacherman backs Evergreen Bleachers™ with a 20-year warranty on the understructure and motors.

The owner has a choice: Sag or No Sag. Please call the Bleacherman at 1-800- 628-1332. Problem solved.

### Do The Math

What do new bleachers *really* cost? In this real-life example, the bleachers originally cost \$90 per seat, delivered and installed. There are 112 gross seats in this section, for a total of \$10,080. After only three years, repairs costing \$2,240 were required because of sagging.

Compare that to new Evergreen Bleachers™ (which include the Century Design®) which cost approximately \$100 per seat. The additional cost of \$10 per seat, times 112 seats, is \$11,200. Evergreen Bleachers™ come with a 20-year warranty that guarantees long-term, trouble-free use, because the understructure will not sag.

Now the owner has to make a decision. To continually repair the bleachers over and over, or to invest \$1,120 in installing the Century Design® no-sag system once. The 20-year warranty states in plain language that if your bleachers sag, we fix it free. That’s a guaranteed return on your investment.