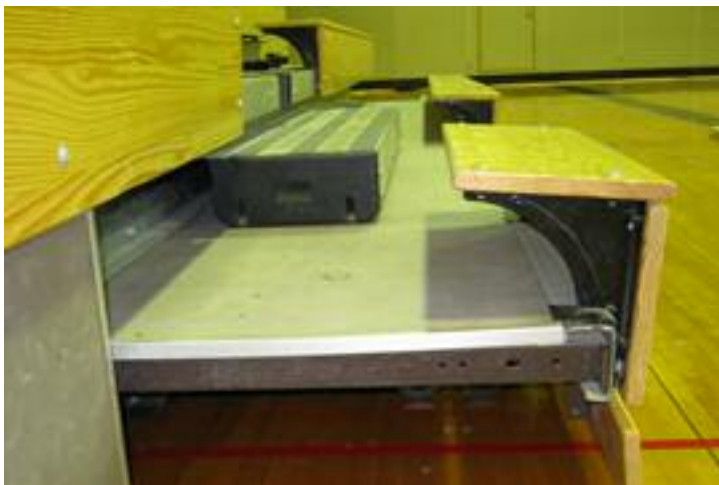


Recycling saves money, helps qualify construction for LEED credits



Situation: LaFargeville Central School constructed a new Track and Fitness Center, replacing the school's old gym. Specifications for the new construction called for recycling existing bleachers in order to qualify for LEED credits.

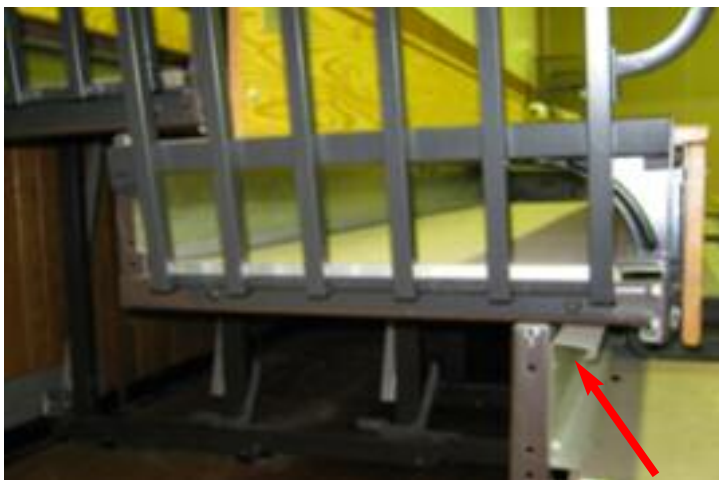
Architect Bernier-Carr was the representative for the owner, and general contractor was MCK. MCK contacted the Bleacherman for a bid on the specifications for recycling bleachers and providing new bleachers as specified.



The existing Interkal® bleachers in the old gym were manually operated, six rows high. Even though the bleachers were fairly new, the understructure was sagging and damage to the seat and riser brackets was visible, as seen above. Operators complained that bleachers were hard to open and close.



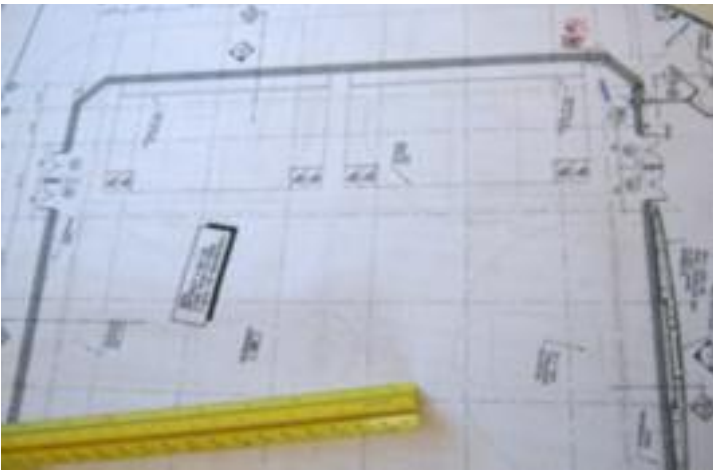
Original bleachers were missing end safety rails for the second row. Demountable P-rails are missing in this photo and could not be located. The ADA cut-outs are missing safety rails, which should be mounted above the cut-out.



Here the extra weight of the self-storing safety rails can be seen as causing sagging at the ends. Arrow shows that the row above has bent the heelboard below, making the bleachers hard to open and close.



Original seat and riser boards were laminated on all four bleacher sections. (This end view shows the laminated strips that make up each original board.) Because additional rows were to be added, the Bleacherman reused all the original laminated lumber as risers, and installed new solid Southern Yellow Pine seats to match.



Working with architects to achieve their LEED qualifying goals fits in with the Bleacherman's recycling methods in conjunction with new Evergreen Bleachers. In this project, we were able to recycle 100% of the existing bleachers. Original six-row high bleacher understructures were re-manufactured into 11-row high Evergreen Bleachers™.



First, the Bleacherman removed all four sections from the old gym. Two sections were stored at the school and two sections removed to the Bleacherman's manufacturing facility for the addition of new rows. All laminated seats and risers were removed, refinished and combined for use as risers on the new bleachers. New seats were fabricated from solid Southern Yellow Pine.



You can't tell what has been recycled, when everything looks (and works) like it's brand new. All the material from the existing bleachers was recycled and co-mingled with new components.



Original Panel-Lam decks were recycled, new Panel-Lam were sourced and installed. (Existing decks were cleaned to match the new decks.) This photo shows the end safety rail is now on row two, new ADA rail above cut-out, self-storing P-rails and intermediate steps in aisle.



Patented Century Design® "no-sag" system installed at the end of a bleacher section. Arrows point to seat-level "runners" that the Century Design® wheel traverses to provide continuous support in any position.



Close up of Century Design® wheel on runner in the full open position. These bleachers were required to meet a “no-sag” specification in the bid.



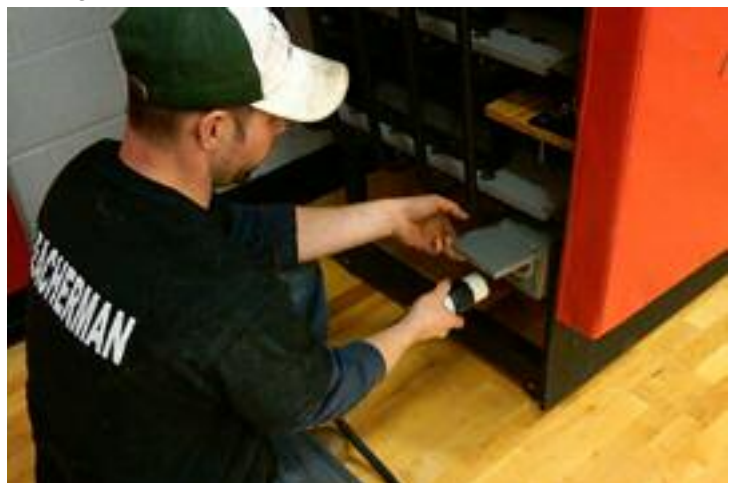
New seats are solid Southern Yellow Pine. The riser below is the original laminated board that was recycled from the old bleachers. The recycled laminated boards were planed, edged and sanded to match the new seats. With new hardware, everything looks new!



Padding for ADA safety rail and P-rail features the “Red Knight” team mascot of LaFargeville Central School. The Bleacherman donated the graphics for padding. Why? Because we always do a little something “extra” over and above our obligations.



Installing the ballast blocks on the heavy-duty motorized drive underneath the bleachers. The motors are 110 volt, allowing the extra safety option of “no live wiring” underneath the bleachers.



Plugging in the removable pendant controls that are used to open and close the bleachers. As a safety precaution, operators also have to plug in an extension cord to an existing wall outlet to provide power to the motors, since there are no “live” wires providing power to the motors.



Operator begins opening new Evergreen Bleachers™ using pendant controls. Bleachers literally open “at the touch of a button.”



Self-storing safety rails and P-rails remain in position at all times, unlike the original bleachers. This provides an extra measure of safety, beyond the minimum code requirements and gives added consideration to those in wheelchairs.



The Bleacherman trains the building and grounds crew in the proper operation of the bleachers and even makes a video for the school, so that new personnel know the correct opening and closing procedure.



Bleachers in fully retracted position. Note shuffleboard floor markings at edge of court.



LaFargeville Central School's Mickey Wills Memorial Gymnasium provides a state-of-the-art multi-purpose facility within the new Track and Fitness Center.

SUMMARY

All Evergreen Bleachers™ include some percentage of recycled materials. The extent of how much is recycled and how much is new is left to the owner to determine, based on the existing bleachers, budget and other considerations.

• **Choose Evergreen Bleachers for long-term, trouble-free use.** Only Evergreen Bleachers are covered by a one-year warranty (parts and labor), with an optional 20-year warranty that states that if the bleacher understructure sags, or the motors become defective, or drive rollers delaminate, we will fix it free of charge. Climbing on the bleachers in the closed position does not void the warranty.

• **Innovative Design for the Real World.** Evergreen Bleachers™ are made to last -- and hold up in the real world, where the aisles (in the closed position) resemble a ladder. It's an "attractive nuisance" that invites kids climb on the bleachers, because the top two rows are "the best seats in the house." Other bleacher manufacturers would use this as an excuse to void their warranty -- not so with the Bleacherman and Evergreen Bleachers™.