

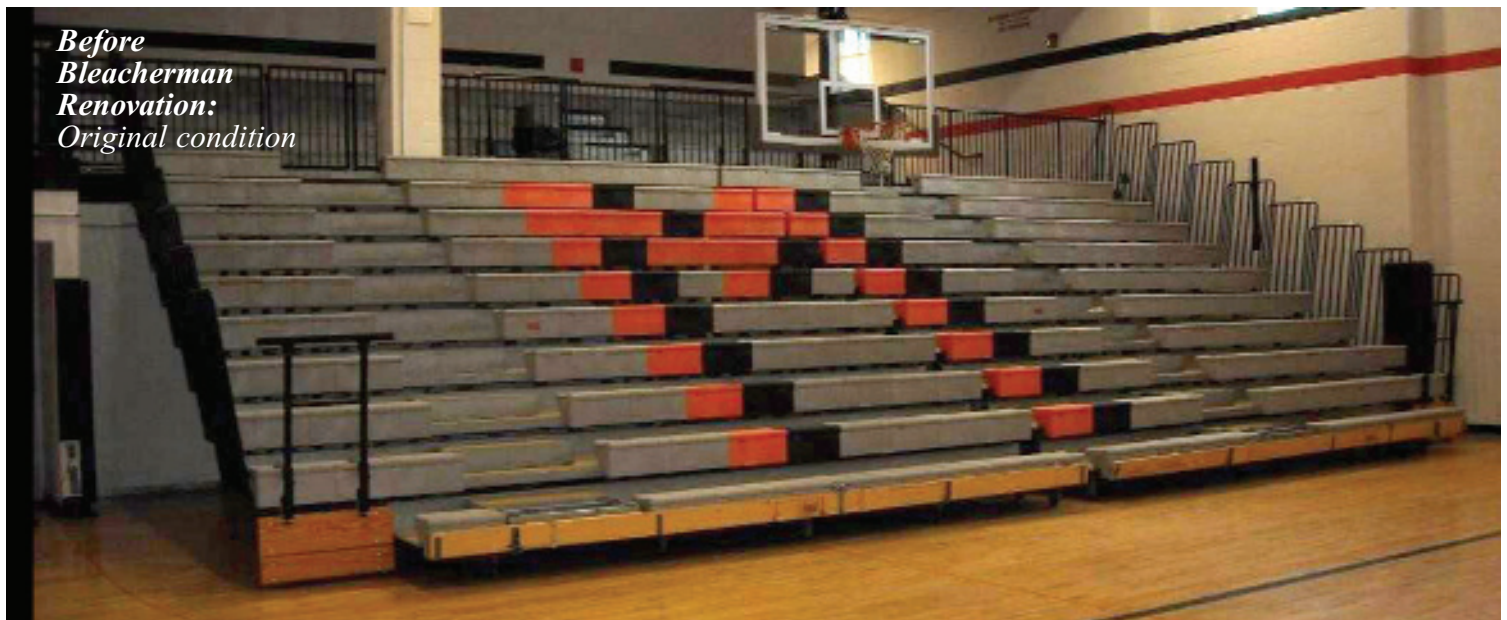
## Case History: Mohawk Central School District, Mohawk, New York Hussey (Two Horse System)

### *What's special about this Case History?*

- Owner realized a 50% savings by renovating/upgrading vs. buying new bleachers.
- Recycling is \$mart - Keep good components (such as end and top safety rails, ADA rails, understructure) and protect your equity in them.
- Plastic Seat Modules are easily cut to size, if needed.
- Even relatively new bleachers can benefit from having the Century Design® system retrofitted, which prevents sagging.

In the case of Mohawk Central School District, the school's telescopic bleachers were approximately 10 years old -- and were already sagging badly..

The bleachers were originally installed when the Gregory B. Jarvis Junior/Senior High School Gym was built, and by 2009, these bleachers were in serious need of repair. Several plastic seat modules were cracked or broken, sagging rows made the bleachers difficult to open, gaps between sections presented a safety hazard, aisles were too narrow and lacked safety rails.



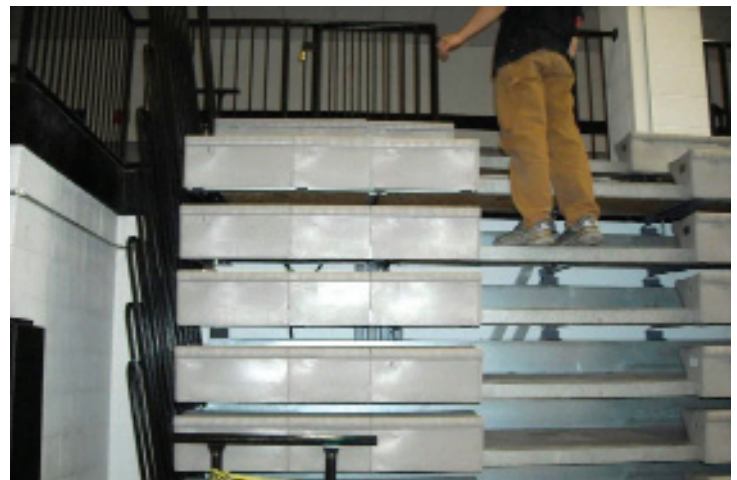
*Before  
Bleacherman  
Renovation:  
Original condition*

The bleachers were faced with plastic seat modules and consisted of twin banks of bleachers (each bank has two sections), 10 rows high X 40 ft. in length. These two-horse bleachers were manually operated.

The school district wanted to make sure that the upgraded bleachers would be safe for students and fully code-compliant. Also, motorizing the bleachers (instead of being manually operated) would reduce the risk of injury to workers operating the bleachers.



Problems caused by extreme sagging made the bleachers difficult to open and close. Note the uneven up-and-down row spacing as well as left-to-right sagging in this photo.



In the closed position, the aisle presented a "ladder" for students to climb - a shortcut to the balcony above.



A gap this big between sections is an “accident waiting to happen.” Openings through which a child’s foot can pass have the potential to cause serious injuries.

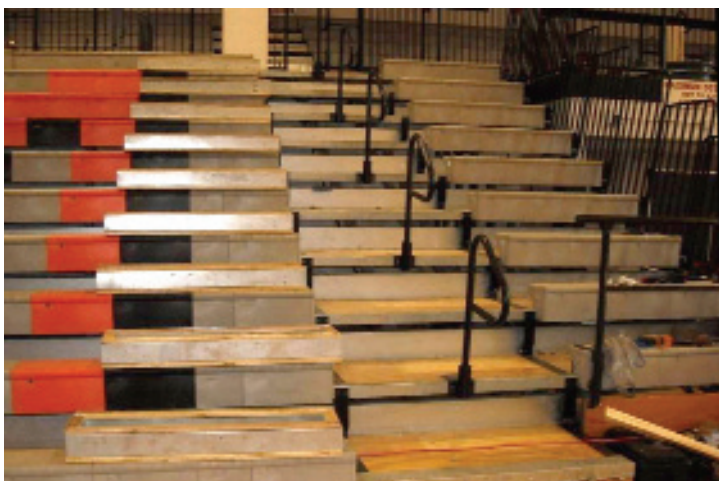
Bleacherman eliminated this gap by tying the sections together and motorizing the entire bank as one unit. Note also the narrow (non code-compliant) aisles.



Original aisles were too narrow -- minimum aisle width today is 48 inches.



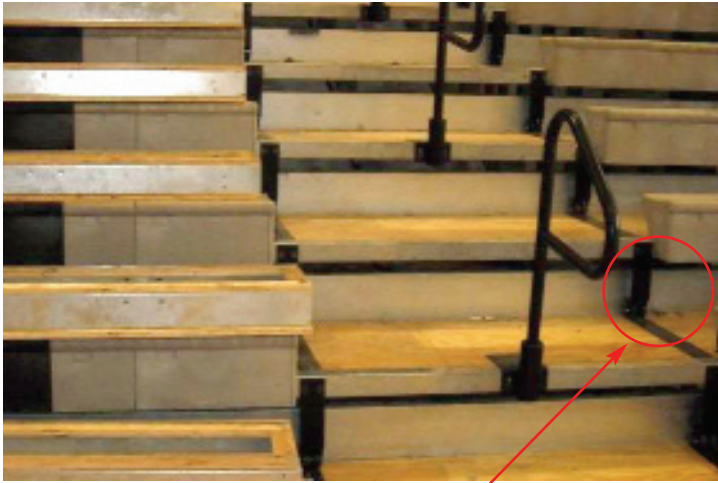
The two-piece plastic seat modules were cut to size or removed to make room for the new, wider aisles.



With our proprietary P-rails, the wider aisles are easier to navigate. In this photo, the new intermediate steps are temporarily placed to the left, pending installation.



New non-skid tape on the aisles will lessen the chance of slips and falls.



To prevent sagging, a foot level Century Design® system was installed on the aisles, and at the ends of the bleachers.



The Century Design® system is shown here, at the ends of the bleachers. This reinforces the understructure and eliminates the damage caused by climbing.



Pendant controls must be plugged in to the power supply and the bleachers (inset), to operate bleachers.



Bottom-line savings compared to buying new -- in excess of 50%. Owners representative was King & King Architects.

### ***Why did the School District choose refurbished bleachers vs. new bleachers?***

Deciding to refurbish existing bleachers - instead of replacing them with new bleachers - was based on three criteria:

- **Savings** - The complete cost of installing the Century Design® no-sag system, motorizing the bleachers and making them code compliant was half the cost of new bleachers.
- **References** - The Bleacherman has a history of many bleacher renovations it has successfully completed as part of King & King Architects' projects.

- **Warranty** - The Bleacherman backs his work with the best warranty in the business:

- 20-year warranty against sagging (climbing is not a disclaimer, and does not void the warranty).
- Motors in drive system have 20-year warranty against material defects or workmanship.
- Drive wheels in motor system have 20-year warranty against delaminating.