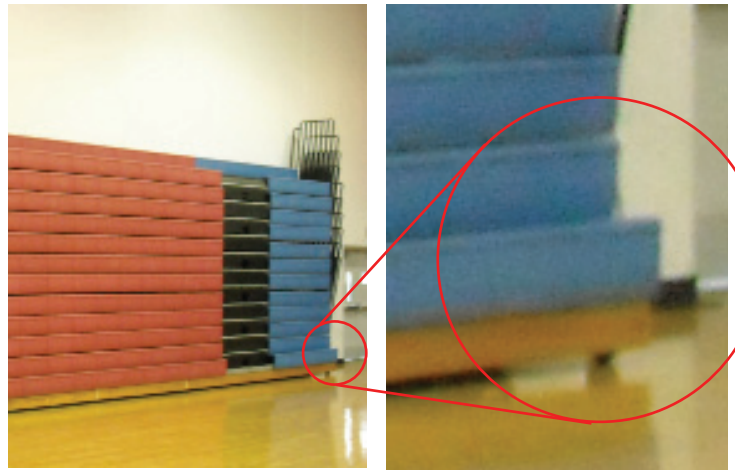


## Case History 2 of 3: Folding Bleacher Co.

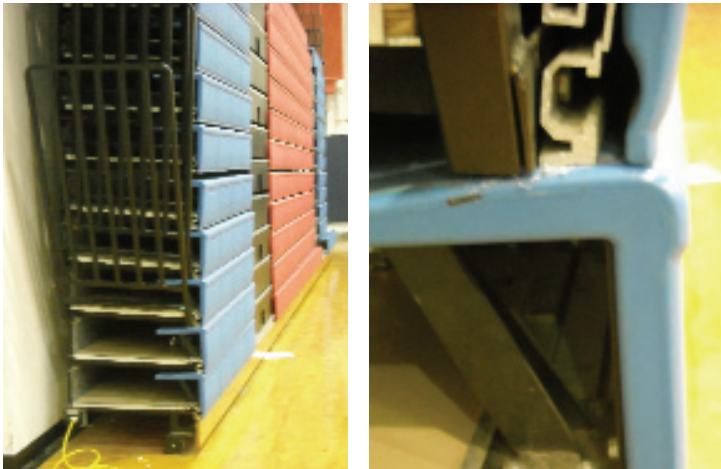
**Situation:** North Tonawanda High School (near Buffalo, NY) had 10-year-old Folding Bleacher Co. telescopic bleachers in the “new gym.” Extensive sagging made the bleachers difficult to open and close, put an extra strain on the motor system. Many of the plastic seats had sustained damage from sagging, as well as regular wear and tear.



North Tonawanda High School is near Buffalo, NY. This was a 3-gym project, the first project was the “old gym.”



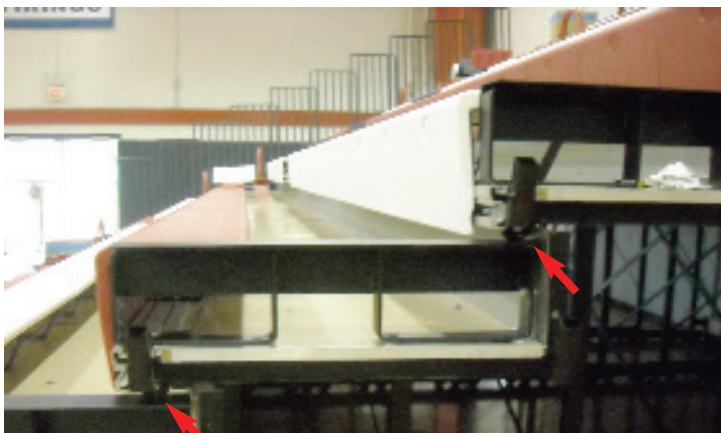
10-year-old Folding Bleacher Co. motorized bleachers are sagging so badly that the bleachers cannot be fully closed. (Note first row at right-hand side.)



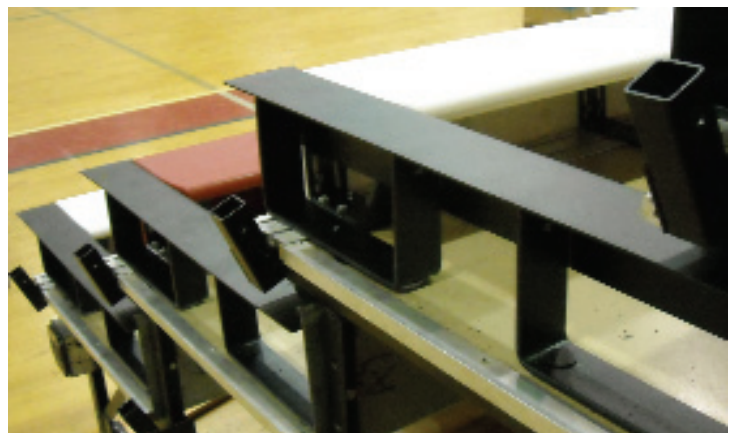
Sagging lower rows are bent so much that they are scraping on the plastic seat below.



After the sagging understructure is corrected, the Century Design® no-sag system is installed. Note the wheel resting on the runner. This raises the row to the correct position.



This view shows the end safety rail removed for clarity, showing a “seat level” Century Design® no-sag system installed on the end of each bank to prevent future sagging.



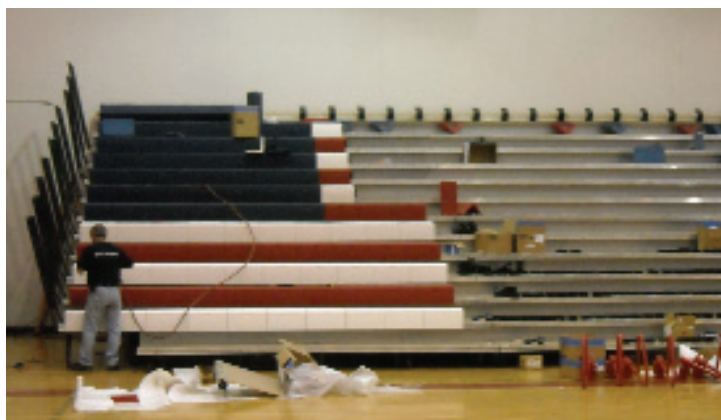
Another view of the “seat level” Century Design® no-sag system, showing the runner that the wheels ride upon. (End safety rail removed for clarity.)

## Bleacherman's "American Flag" Bleachers

When telescopic bleacher seats have extensive damage, it may be impossible to match old wood with new wood, or to match the color of older plastic seat modules.

Whether the original seats are wood or plastic, adding an "American Flag" to your gym seats is a way to replace damaged seats without having to match them exactly. (These colors are ALWAYS in stock and there is no extra charge for mixing these three colors.)

The seats that are replaced by the American Flag are reused; replacing damaged seats in other locations in the gym -- and they match perfectly for an "as-new" look. Surplus seats are kept in inventory for future use as needed. Recycle, waste nothing & save \$.



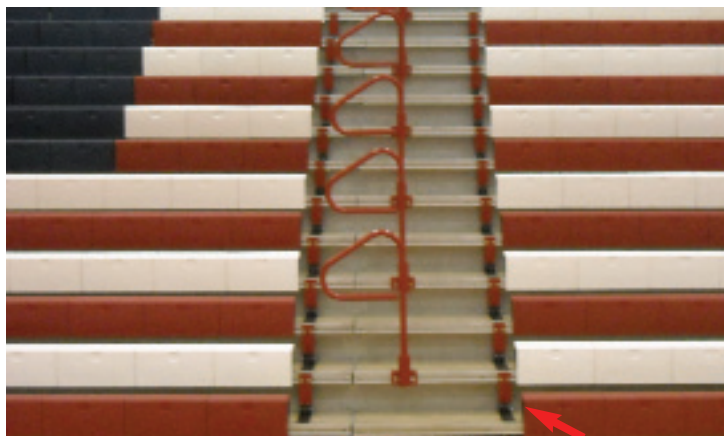
The original plastic seat modules in this bank of bleachers were replaced with our "American Flag" seats. The original seats were removed, sorted and good condition seats were re-installed in the first 3 rows throughout the gym, replacing deformed and damaged seats.



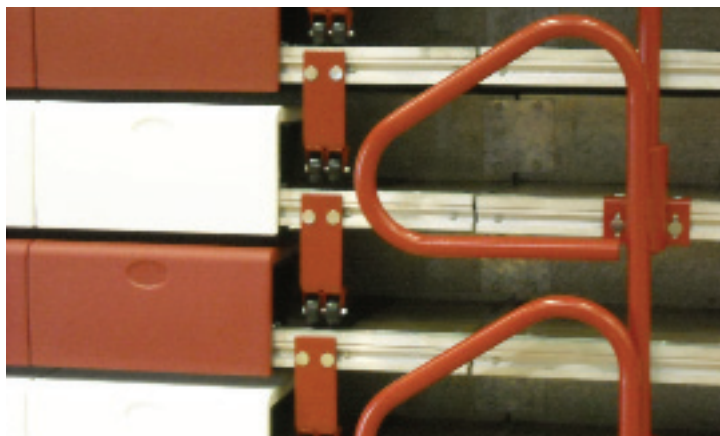
All the replacement seat modules are installed, safety equipment in place (end rails, ADA rails and P-rails).



Installing stars to complete the American Flag look.



A "foot level" type of Century Design® is used on the aisles to prevent future sagging. Seen here in the open position. A wheel rides continuously on a steel runner installed on the footboard.



A closer look at the "foot level" Century Design® in the closed position. Note the even row spacing, now that the no-sag system is installed.



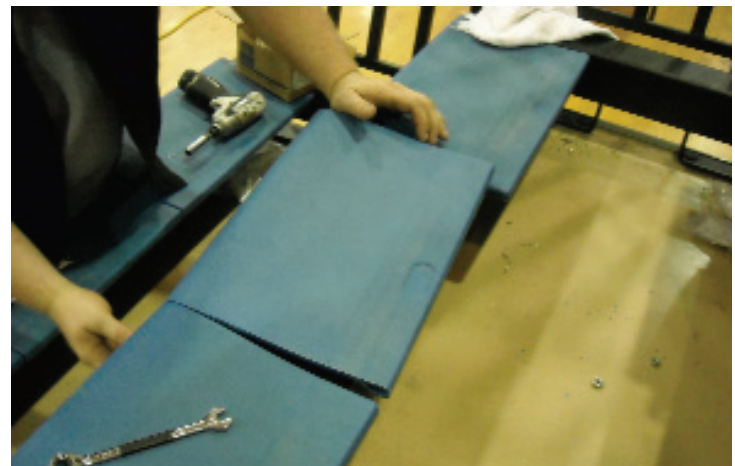
Installing ADA wheelchair space. ADA safety rail will be mounted here in compliance with ADA requirements.



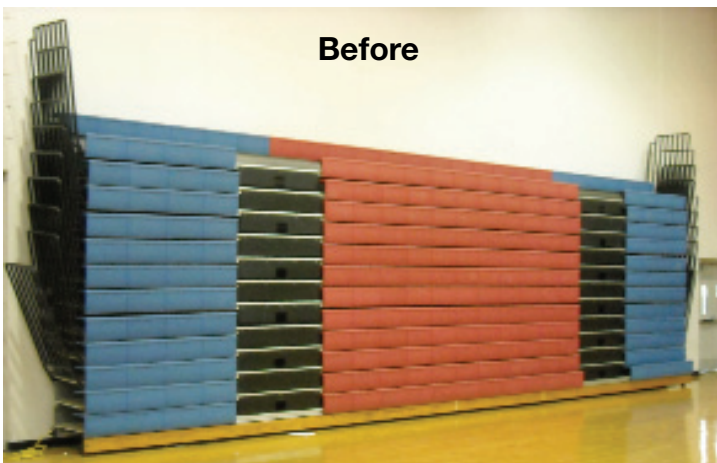
Seat modules are being installed. Most of the safety equipment is in place, while additional ADA wheelchair cut-outs are in progress.



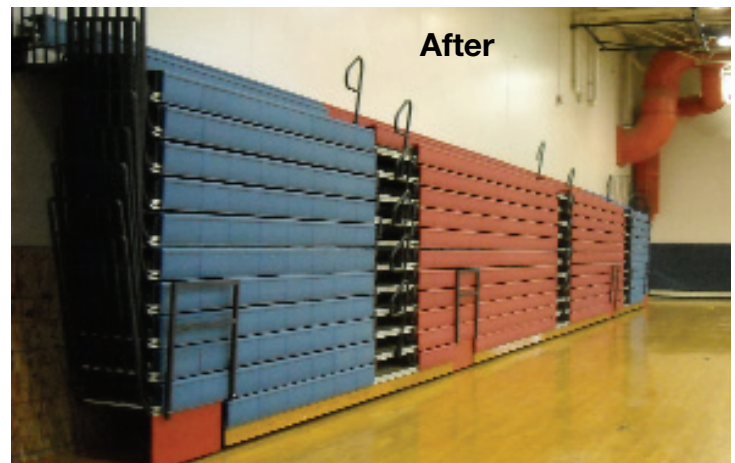
Plastic seat modules that are obtained from the "American Flag" section are used to replace deformed or damaged ones. Here a seat is being trimmed to size before mounting.



After being sized correctly, the plastic seat module fits seamlessly and matches the other seat modules perfectly.



Before renovations, bleachers were sagging. This bank has a bent safety rail on the left-hand side. Aisle closure panels were bent and had sharp edges - a safety concern. Also note the uneven row spacing.



After renovations were complete, this bank of bleachers has new safety equipment, including self-storing P-rails, ADA rails, widened 48" aisles. Understructure was repaired and retrofitted with Century Design® system, in conjunction with a new motor system. Recycled/reused seat modules "match" color perfectly providing better aesthetics at less cost than new.